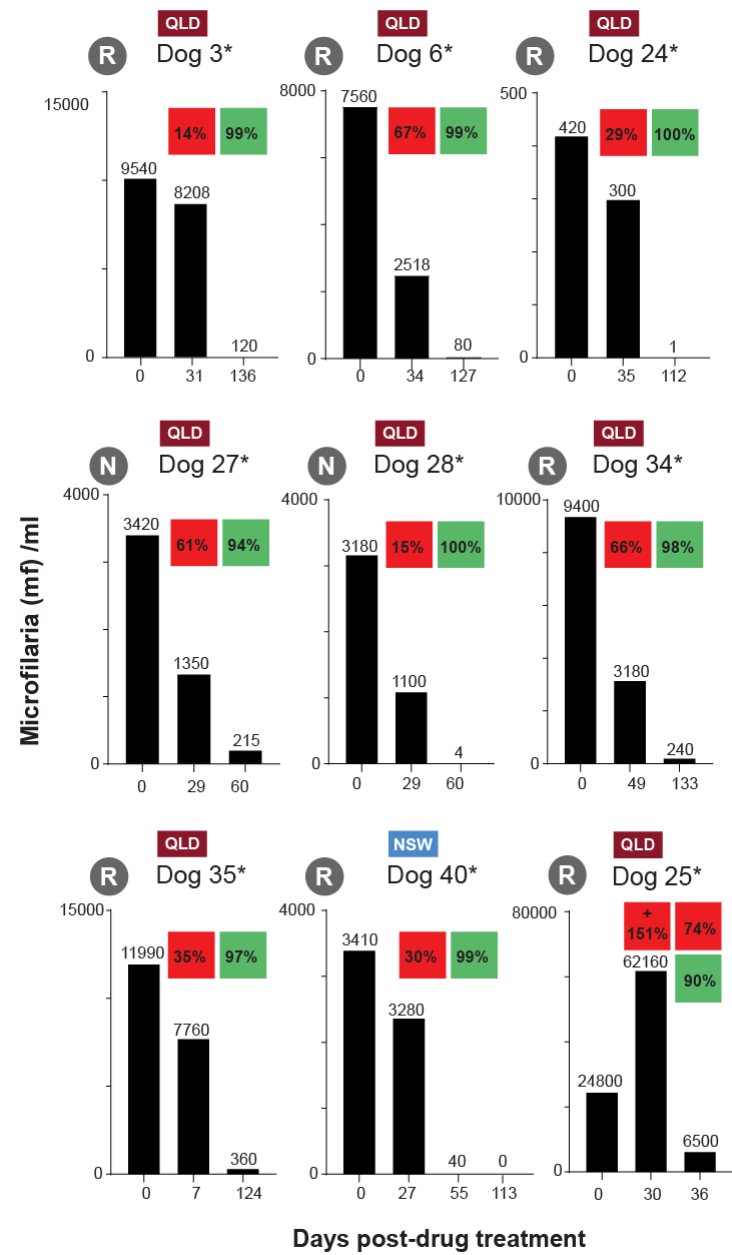


Phenotype suggests resistance

Microfilaremia not reduced >90% ~30 days after drug treatment



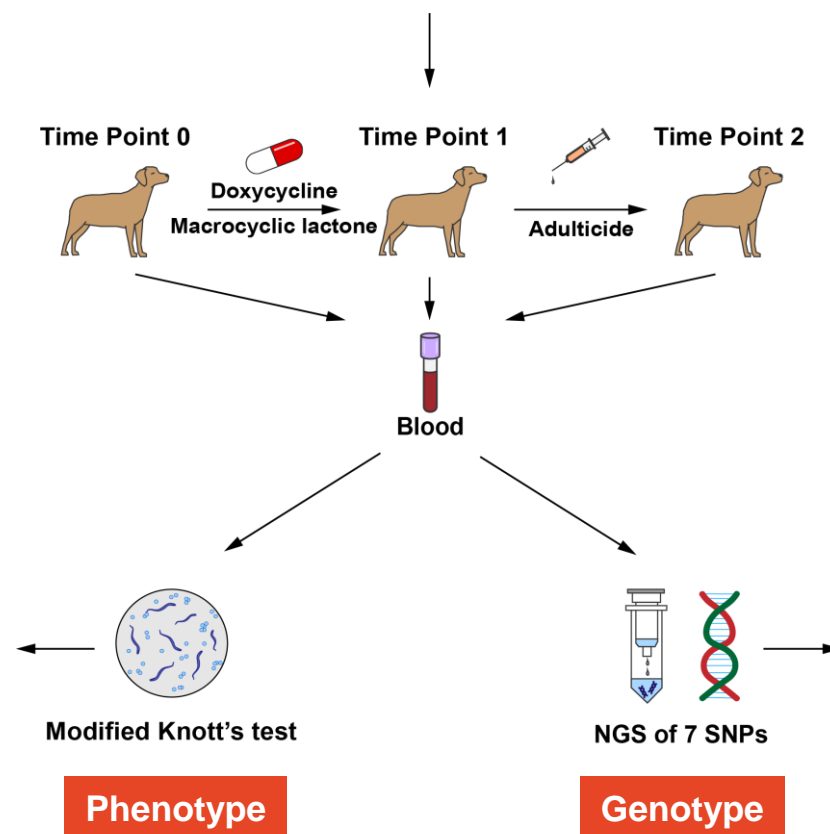
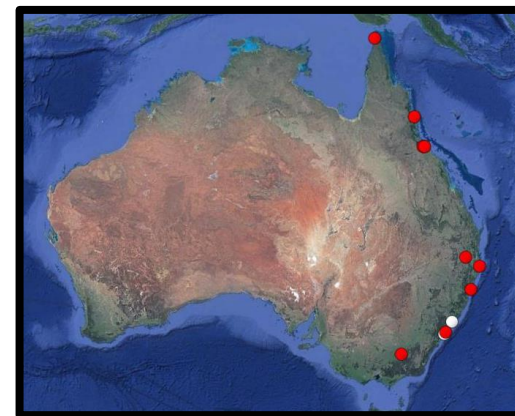
Prevention rigor declared by owner:

R Rigorous prevention **S** Sporadic prevention **N** No prevention

ML received at diagnosis: * Moxidectin ** Ivermectin *** Milbemycin oxime

Eastern Australia

Dogs not responding to drug treatment (n=45)



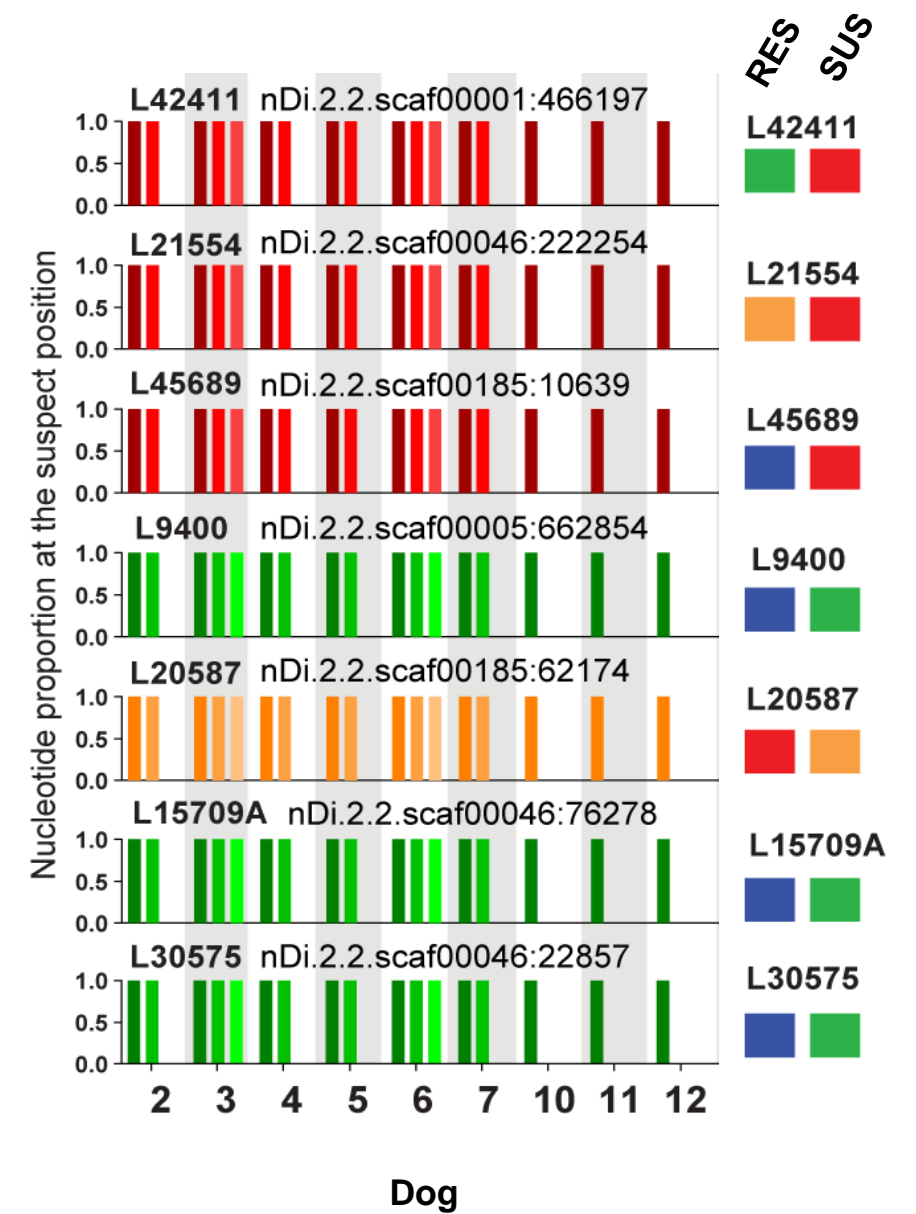
Phenotype

Genotype

So... what does this all mean?
Come ask me in the poster session!

Genotype suggests susceptibility

Only 'susceptible' nucleotide at SNPs associated with resistance in USA



0 1st 2nd blood post-ML
Nucleotide: A (red) C (blue) G (orange) T (green)