

The protein kinases SmFES and SmRAF may influence *Schistosoma mansoni* development, egg maturation, and hepatic granulomas progression in the mammalian host

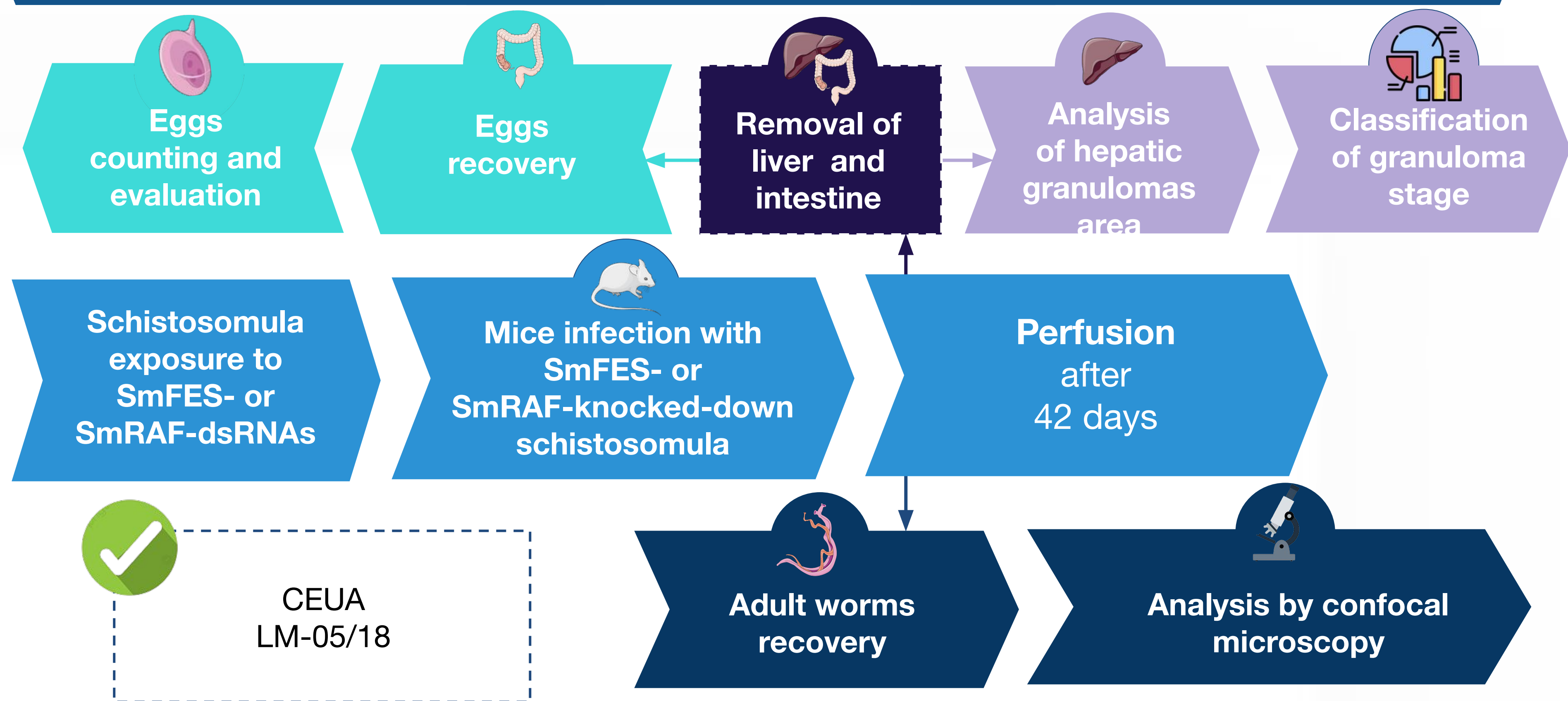
TORRES GP¹; TAVARES NC¹; GAVA SG¹; MOURÃO MM¹

¹ Helminthology and Medical Malacology Group, René Rachou Institute/Oswaldo Cruz Foundation, Belo Horizonte/MG.

INTRODUCTION

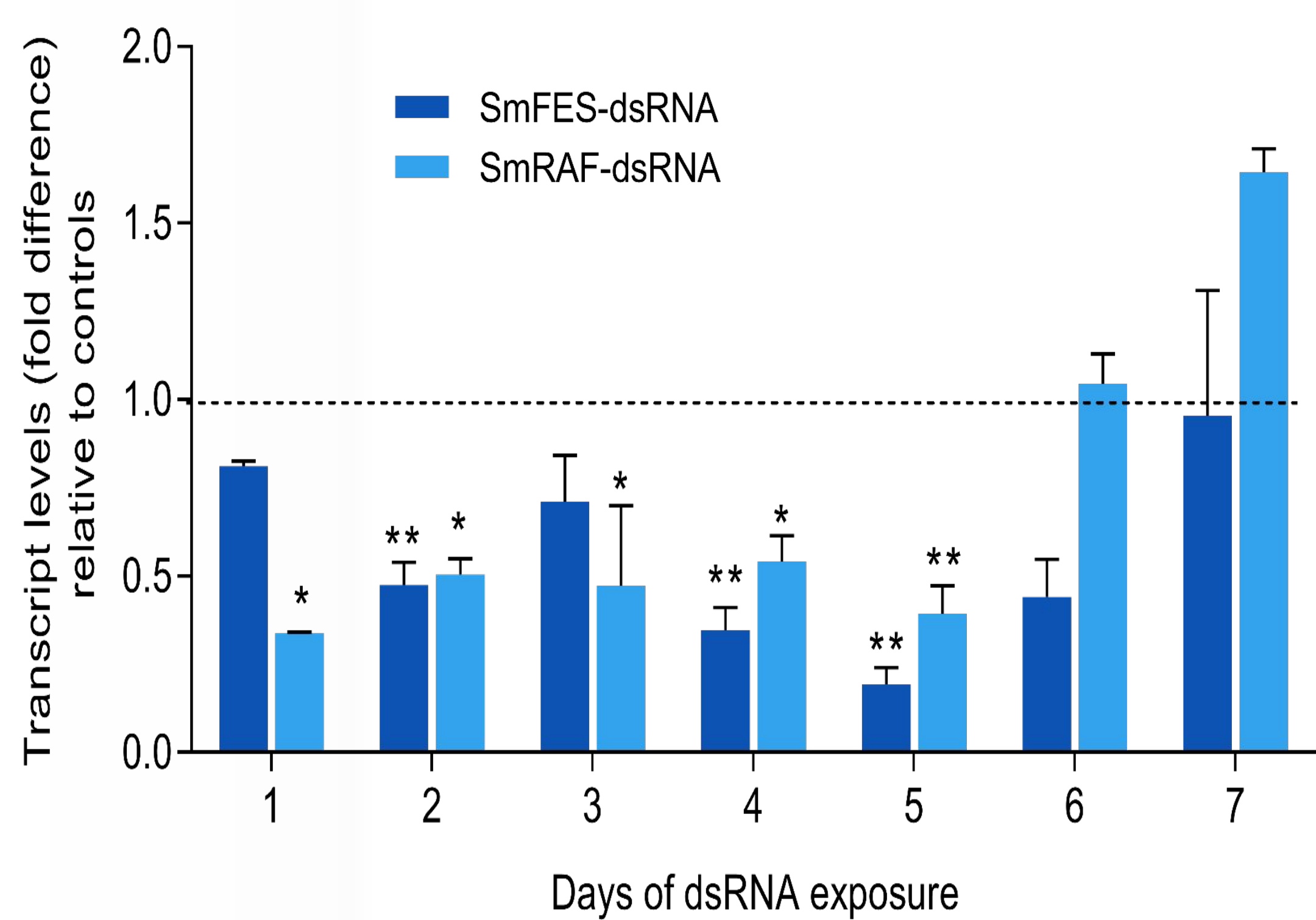
Schistosomiasis' pathology is induced by eggs deposited in the mammalian host tissues and causes high morbidity. Its treatment relies on a single drug, praziquantel. However, praziquantel treatment presents limitations, thus functional studies to elucidate parasite specific novel targets are needed to find alternative therapies. Studies suggest that protein kinases (PKs) have an essential role in *Schistosoma mansoni* development and survival. Therefore, this study aims at investigating the functions of SmFES and SmRAF PKs in the schistosomula development and during the establishment of mammalian and intermediate host infection.

METHODOLOGY

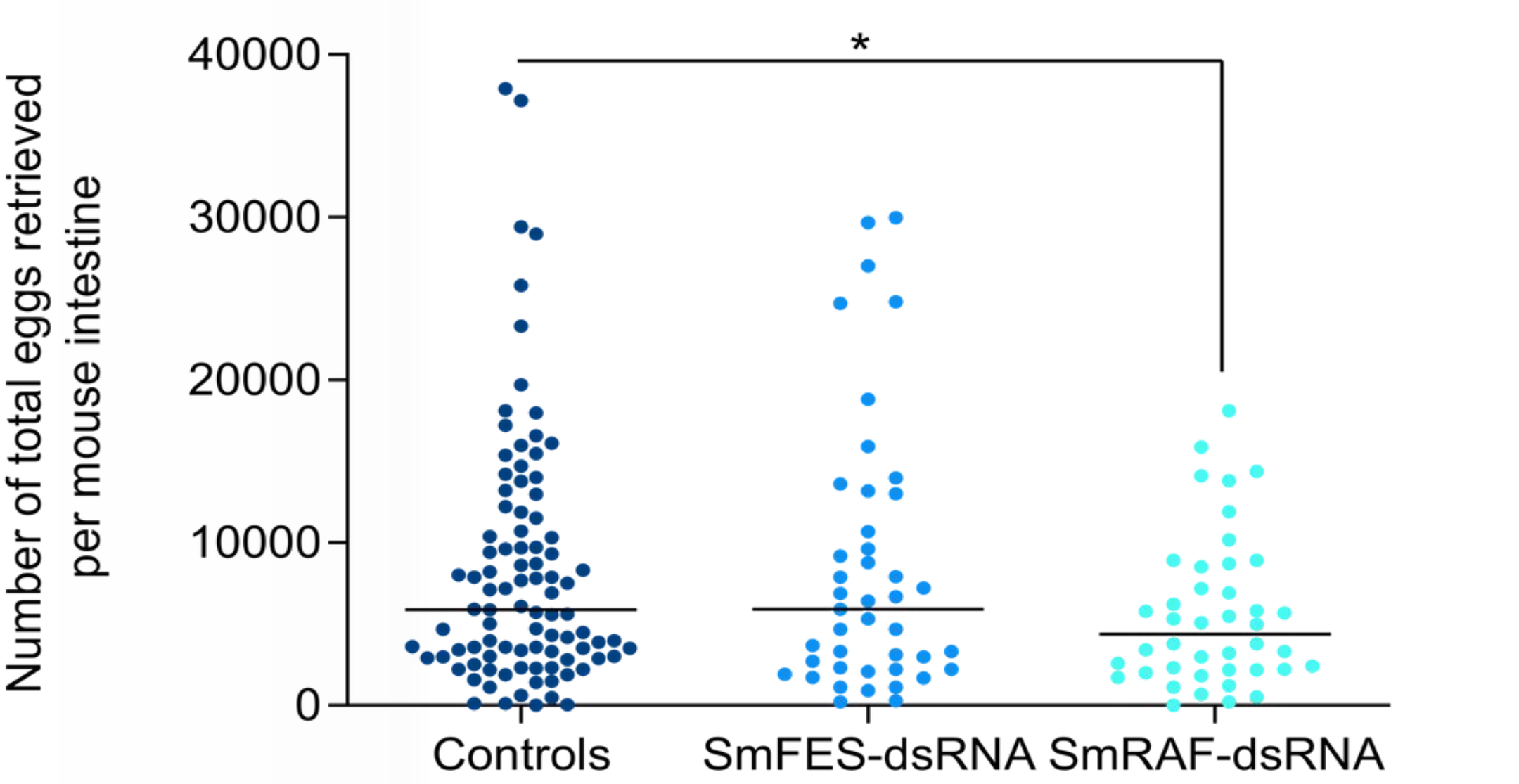


RESULTS

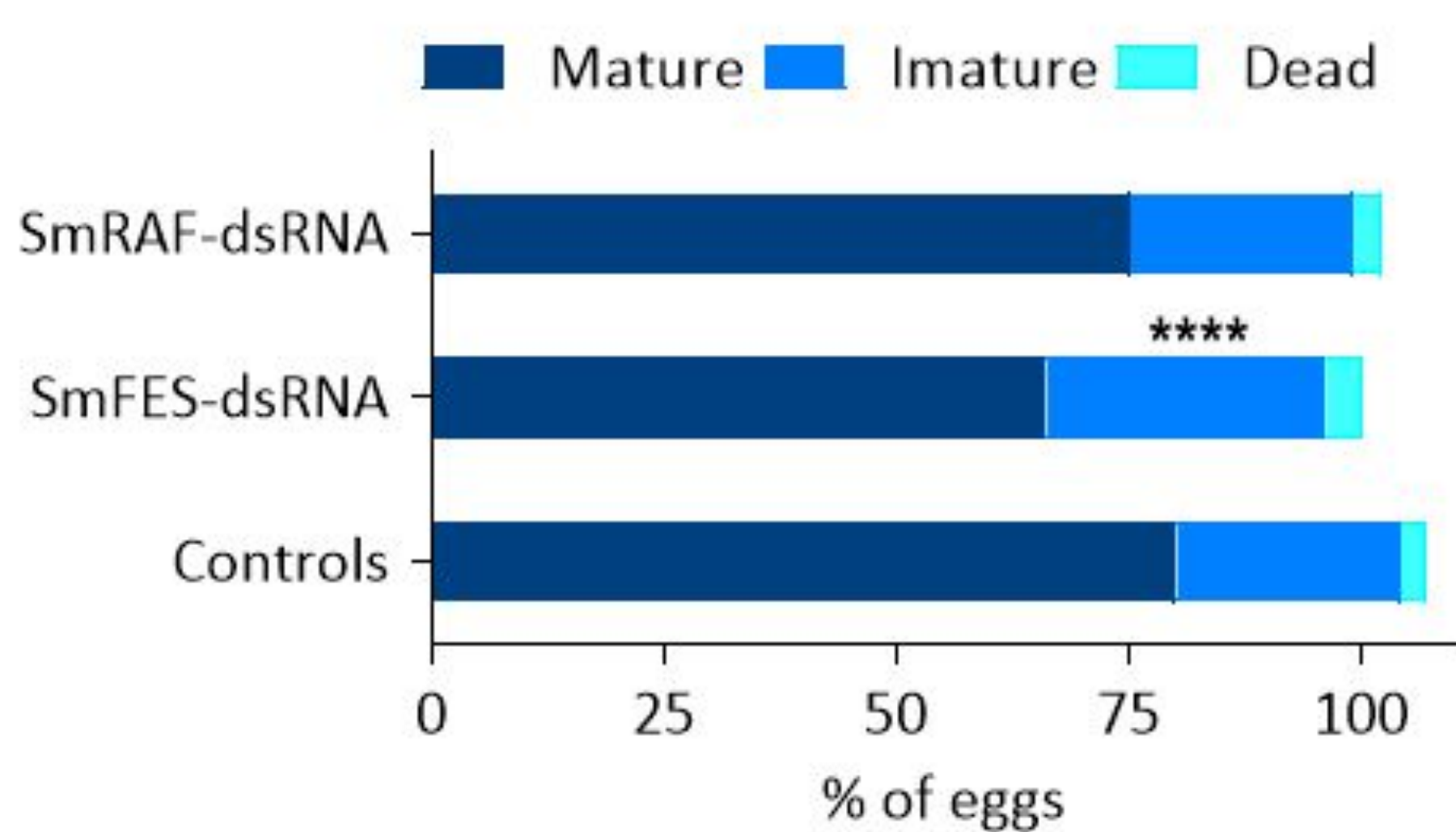
TRANSCRIPT LEVELS IN SmFES- and SmRAF- KNOCKDOWN SCHISTOSOMULA DURING 7 DAYS POST Ds-RNA EXPOSURE



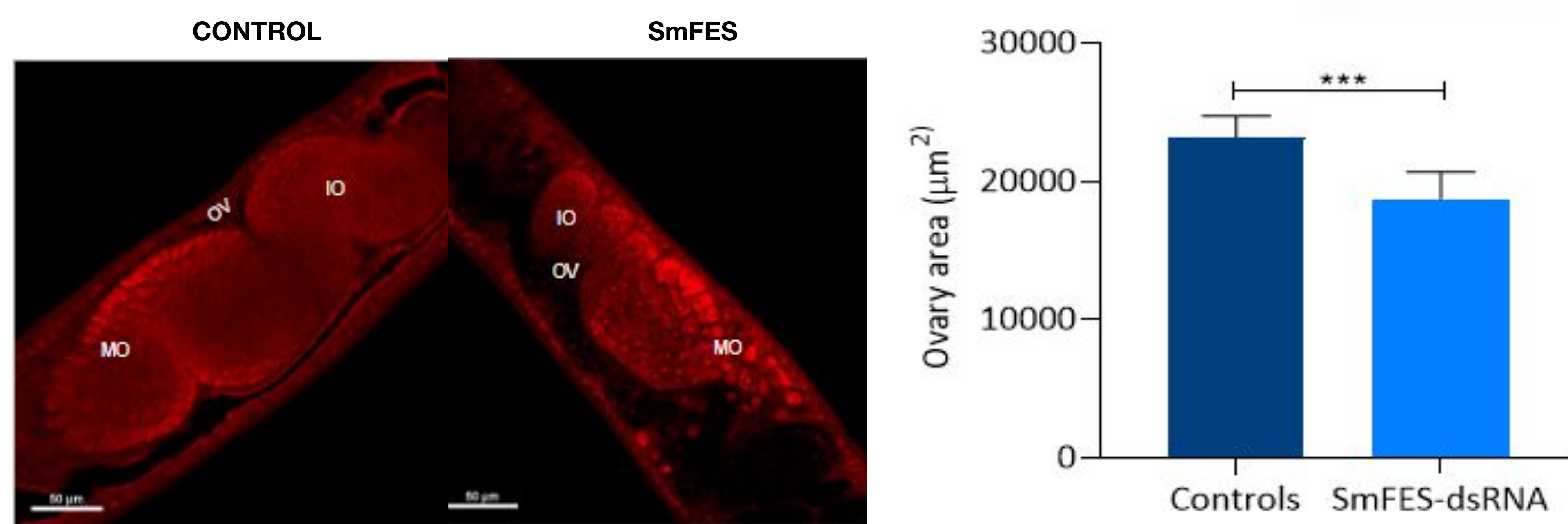
NUMBER OF EGGS RECOVERED FROM INTESTINE OF MICE INFECTED WITH SmFES and SmRAF KNOCKED-DOWN SCHISTOSOMULA



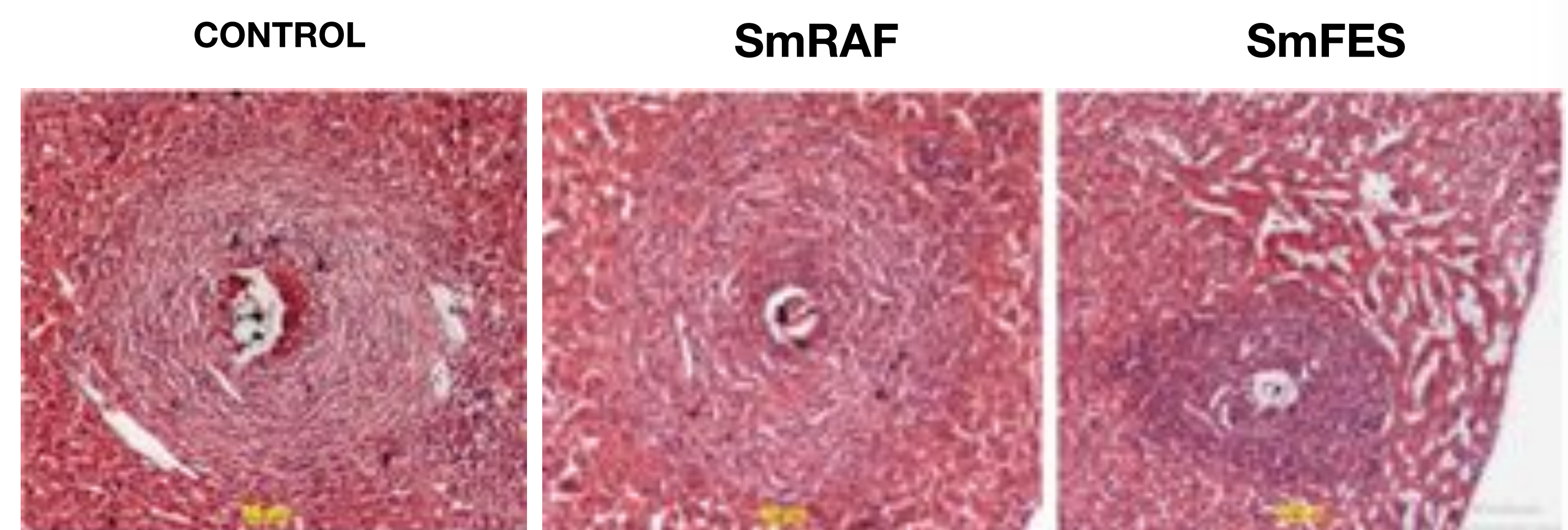
MATURATION OF EGGS PRESENT IN THE ILEUM OF MICE INFECTED WITH SmFES and SmRAF KNOCKED-DOWN SCHISTOSOMULA



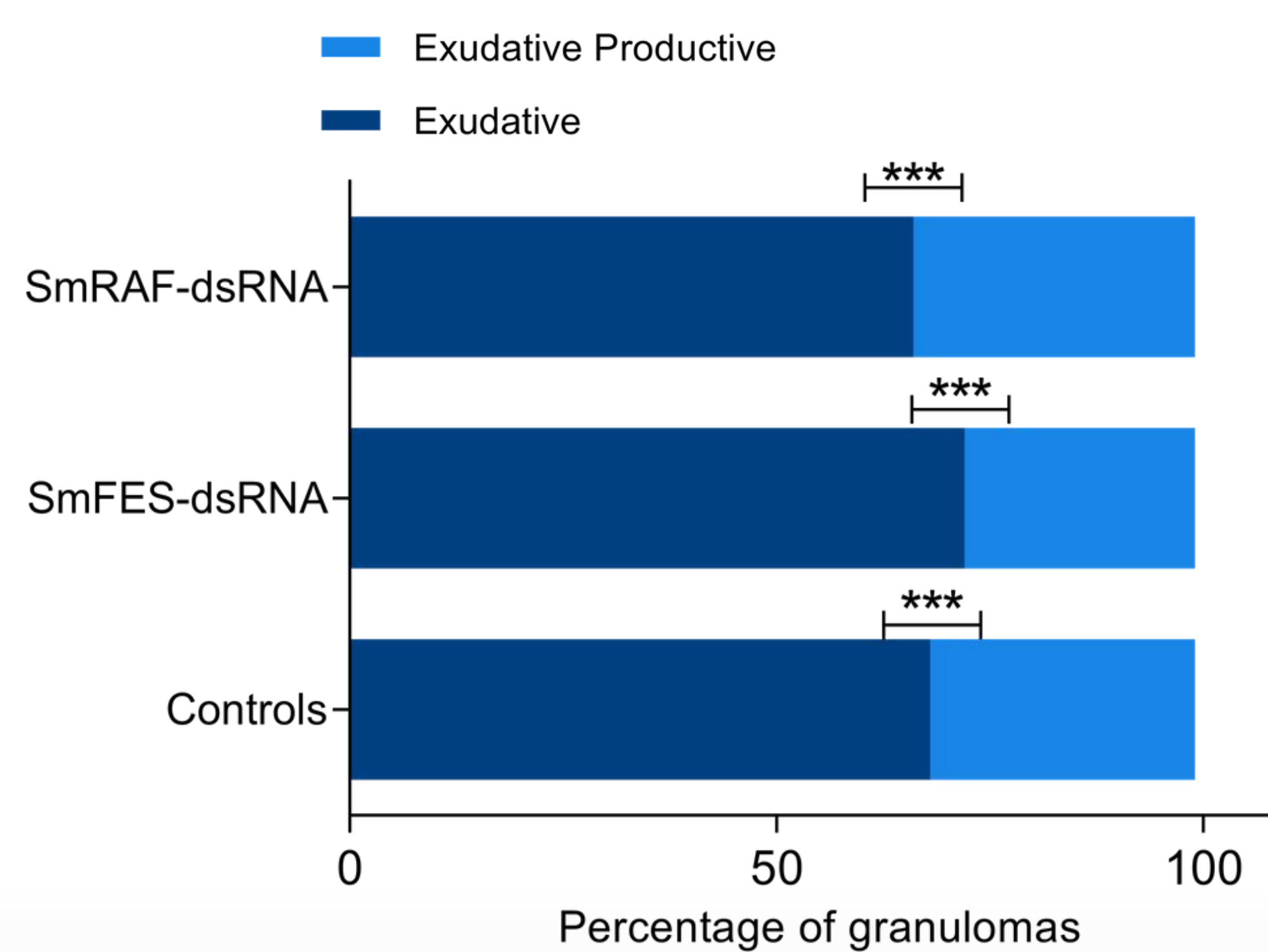
CONFOCAL AND MORPHOMETRIC ANALYSIS OF THE OVARY AREA OF FEMALES RECOVERED FROM MICE INFECTED WITH SmFES KNOCKED-DOWN SCHISTOSOMULA



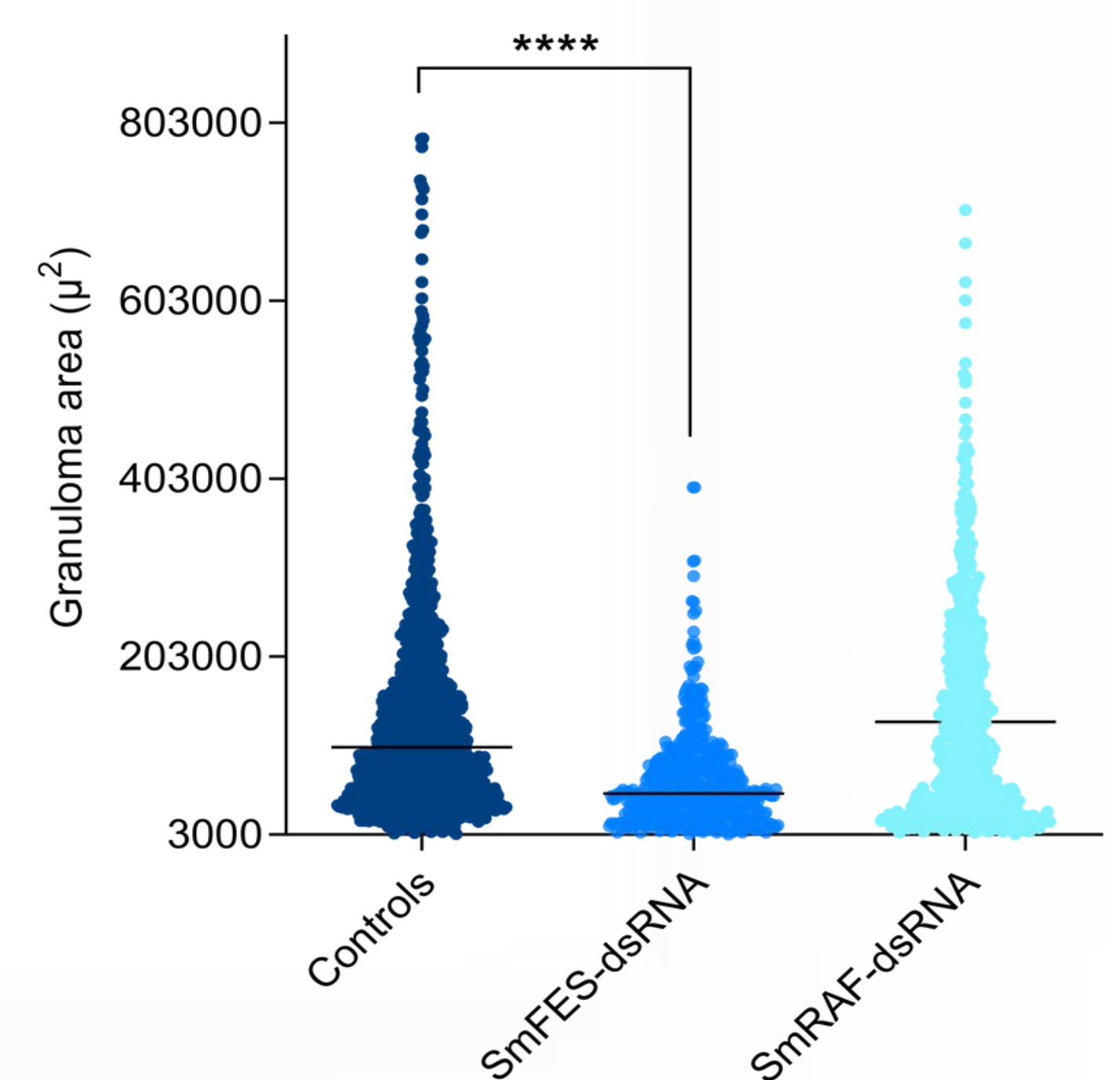
REPRESENTATIVE IMAGES OF HEPATIC GRANULOMAS FROM MICE INFECTED WITH SmFES and SmRAF KNOCKED-DOWN SCHISTOSOMULA



CLASSIFICATION OF HEPATIC GRANULOMAS FROM MICE INFECTED WITH SmFES and SmRAF KNOCKED-DOWN SCHISTOSOMULA



AREA OF HEPATIC GRANULOMAS FROM MICE INFECTED WITH SmFES and SmRAF KNOCKED-DOWN SCHISTOSOMULA



CONCLUSION

- SmFES influences egg maturation and might interfere in exudate components, thus affecting granuloma formation;
- SmFES seems to be essential to granuloma formation and could be explored as a target to assist in the control of schistosomiasis pathology ;
- SmFES influence the development/maturation of female worms ovaries;
- SmRAF may participate in egg production, but more studies should be conducted to elucidate its role.